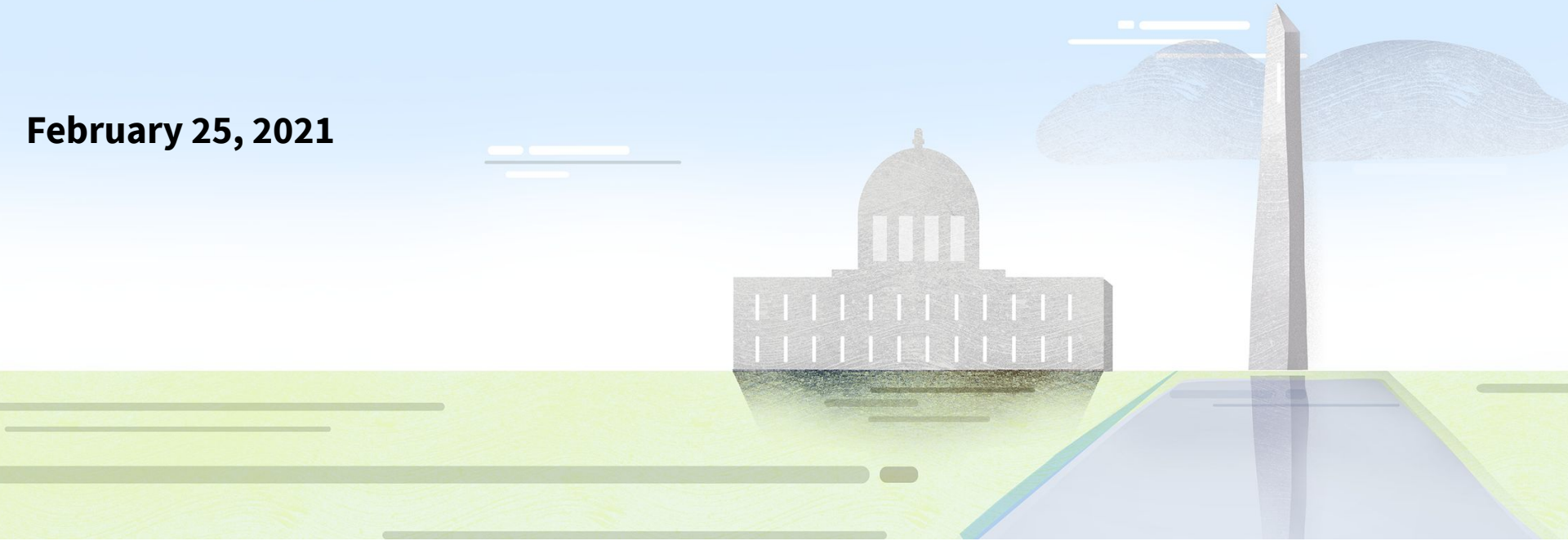


# IAE Technical & Interface Community (TIC)

February 25, 2021



Integrated Award Environment | For People Who Make, Receive, and Manage Federal Awards

## Agenda

- Current users of SAM.gov data
- SOAP Deprecation
- Reference Slides
- Modernization
- Legacy Systems



# Current Users of SAM.gov Data Services

Katherine Rollins



IAE Technical and Interface Community Meeting - February 25, 2021

Integrated Award Environment | For People Who Make, Receive, and Manage Federal Awards

# REMINDER for current users of SAM.gov data

## SAM transitioning to beta.SAM.gov

### AS A USER OF SAM.gov DATA YOU NEED TO BE AWARE OF THE FOLLOWING CHANGES on May 24, 2021

- All SAM.gov functionality is moving to beta.SAM.gov on May 24, 2021.
- As part of the transition, beta.SAM.gov will be renamed SAM.gov.
- After May 24, 2021, access to SAM.gov data services for entity and exclusion data will only be found at <https://open.gsa.gov>.
- **System accounts** need to be created in beta.SAM.gov. To learn how to create a system account, view this [System Account Video](#).
- **SAM Extracts** (Entity Management Public, Entity Management for Official Use Only (FOUO), Entity Management Sensitive, and Exclusions Public) will transition from SFTP to access through an API. They are currently available via API for testing.
- **SOAP Services** will be replaced by REST APIs. REST APIs are currently available for testing.

## UEI (DUNS) □ UEI (SAM)

- The DUNS will remain the authoritative identifier for entities for SAM.gov data through May 24, 2021.
- The new SAM-generated unique entity identifier (UEI) is replacing the DUNS number and will be the only identifier on 4/4/2022.
- System users who ingest SAM data need to switch to the new extracts or APIs and prepare/reconfigure their systems to allow for the new UEI (SAM).
- New versions of SAM extracts and APIs are available now. These new extracts contain both the UEI (DUNS) and the UEI (SAM) to allow users time to prepare for the eventual transition to UEI (SAM).



# Understanding Modernized Data Access Points

<p><b>Previous:</b> Entity Management Extracts Public Data Package/V2 [Access Method: SFTP]</p> <p><b>New:</b> Entity/Exclusions Extract Download API - Public  <a href="https://open.gsa.gov/api/sam-entity-extracts-api/">https://open.gsa.gov/api/sam-entity-extracts-api/</a> [Download via API]</p>	<p><b>Previous:</b> Entity Management Extracts FOUO Data Package/V2 [Access Method: SFTP]</p> <p><b>New:</b> Entity/Exclusions Extract Download API - FOUO  <a href="https://open.gsa.gov/api/sam-entity-extracts-api/">https://open.gsa.gov/api/sam-entity-extracts-api/</a> [Download via API]</p>	<p><b>Previous:</b> Entity Management Extracts Sensitive Data Package/V3 [Access Method: SFTP]</p> <p><b>New:</b> Entity/Exclusions Extract Download API - Sensitive  <a href="https://open.gsa.gov/api/sam-entity-extracts-api/">https://open.gsa.gov/api/sam-entity-extracts-api/</a> [Download via API]</p>
<p><b>Previous:</b> Exclusions Extract Data Package/V2 [Access Method: SFTP]</p> <p><b>New:</b> Entity/Exclusions Extract Download API - Public  <a href="https://open.gsa.gov/api/sam-entity-extracts-api/">https://open.gsa.gov/api/sam-entity-extracts-api/</a> [Download via API]</p>	<p><b>Previous:</b> Entity Management Web Service FOUO [Access Method: Web Service]</p> <p><b>New:</b> Beta.SAM.gov Entity Management API  <a href="https://open.gsa.gov/api/entity-api/">https://open.gsa.gov/api/entity-api/</a> [via REST API]</p>	<p><b>Previous:</b> Entity Management Web Service Sensitive [Access Method: Web Service]</p> <p><b>New:</b> Beta.SAM.gov Entity Management API  <a href="https://open.gsa.gov/api/exclusion-api/">https://open.gsa.gov/api/exclusion-api/</a> [via Rest API]</p>



- **REST API Connections**

- Any agency approved REST API client is usable for testing and accessing the APIs
- Example tools include Postman, SOAPUI, and JMeter (many others available)
- Modernized SAM does not restrict the specific tool used to connect to REST APIs

- **Modernized SAM Help**

- FSD/alpha help email can answer questions on REST API specifications and connection
- Agency and tool specific help desks will need to be contacted for issues or set up with a specific tool

# Contract Opportunities Management SOAP Depreciation

John Corro



IAE Technical and Interface Community Meeting - February 25, 2021

Integrated Award Environment | For People Who Make, Receive, and Manage Federal Awards

### **Deprecation of Contract Opportunities SOAP service complete**

- Beta.sam.gov (production): Friday, February 12, 2021 (8pm ET)
- **All systems must be on production Opportunity Management Rest API Version 1 or 2 to submit notices**
- **Plan for the future...Opportunity Management REST APIs Version 2 UEI**
  - Version 2 (V2) is available now in Beta.SAM.gov to use and alpha.SAM.gov to test
  - Will allow UEI (SAM) for 'submit' calls only (DUNS will be deprecated)
  - UEI (SAM) will show on front end along with historic UEI (DUNS) based on policy determined
  - When UEI (SAM) becomes authoritative:
    - REST APIs V1 (using DUNS) will become unusable by 4/4/2022
    - REST APIs V2 will be required

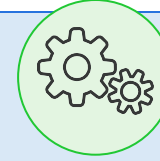
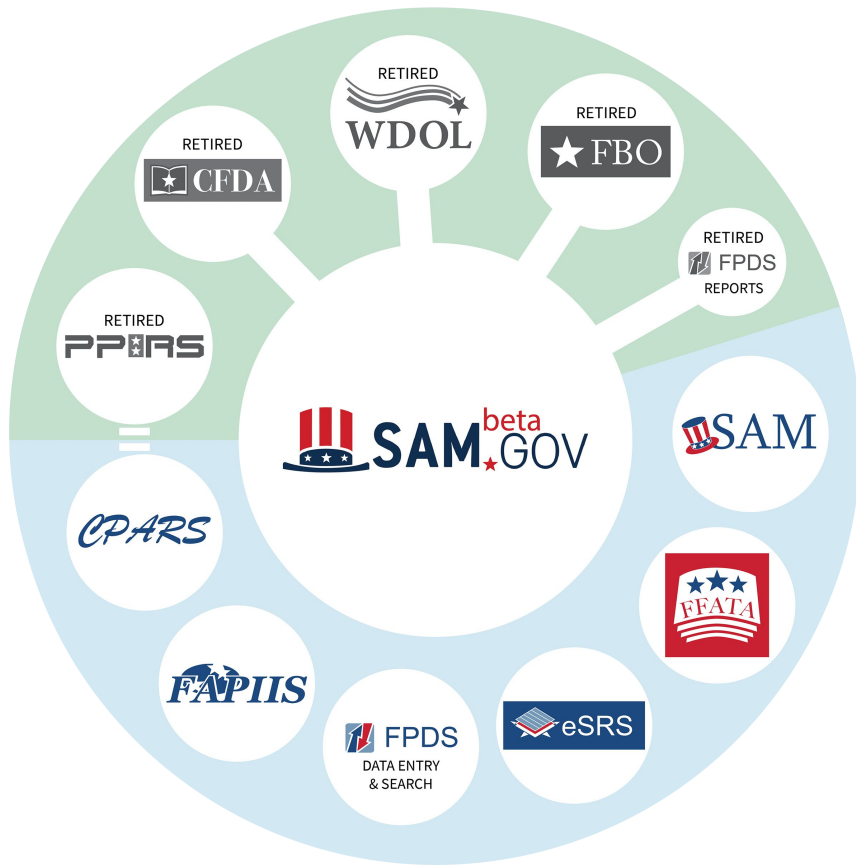


## Other Questions / Comments



### **Next Meeting**

March 25, 2021



## Reference Slides

# Getting System Help

- **Federal Service Desk (FSD) - All users have access**
  - Report connectivity issues - user cannot access available tools
  - Report functionality issues - designed functionality is not working or is not available
- **IAE/SAM Enhancements (IAEENH) - All CCB Reps should have access\***
  - Report system bugs - designed functionality is not accurate
  - Suggest enhancements - functionality can be improved
  - Ticket format is IAEENH-123
- **SAM/IAE Request for Assistance (IAEREQ) - All CCB Reps should have access\***
  - Request expedited assistance for Work Stoppage - MUST include FSD ticket information
  - Ticket format is IAEREQ-1234
- **IAE SAM (IAEDEV) - Development teams have access (CCB Reps do not have access)**
  - Ticket format is IAEDEV-12345

\*If you are a primary or alternate CCB Rep and do not have access to JIRA (IAEENH and REQASSIST), contact [salomeh.ghorbani@gsa.gov](mailto:salomeh.ghorbani@gsa.gov).



## Beta.SAM Entity Information Data Status

- Entity information data has the following status in different mediums as follows:

Location	Sensitivity	Environment	Notes
Entity Extracts	Public, FOUO (V1/V2)	Production	Identical to Authoritative Files in SAM. Loaded at same time as SAM.
Entity Extracts	Sensitive (V2/V3)	Production	Identical to Authoritative Files in SAM. Loaded at same time as SAM.
Entity API	Public, FOUO	Production	Incomplete data, one day delayed
Entity API	Sensitive	Production	Incomplete data, one day delayed.
Entity Display	Public	Production	Incomplete data, one day delayed Will be alpha only from 4/26 - 5/24
Entity Display	FOUO, Sensitive	Alpha	Incomplete data, one day delayed

## Beta.SAM.gov API Status (1 of 2)

API	Status	Access Level	Specs Location
PSC API	Production	Public	<a href="https://open.gsa.gov/api/PSC-Public-API/">https://open.gsa.gov/api/PSC-Public-API/</a>
FH FOUO API	Production	FOUO - System Account Only	<a href="https://open.gsa.gov/api/fh-fouo-api/">https://open.gsa.gov/api/fh-fouo-api/</a>
FH Public API	Production	Public	<a href="https://open.gsa.gov/api/fh-public-api/">https://open.gsa.gov/api/fh-public-api/</a>
Opportunities Management APIs v1	Production	Role Based	<a href="https://open.gsa.gov/api/opportunities-api/">https://open.gsa.gov/api/opportunities-api/</a>
Opportunities Management APIs v2	Production	Role Based	<a href="https://open.gsa.gov/api/opportunities-api/">https://open.gsa.gov/api/opportunities-api/</a>
Opportunities Management SOAP Web Services	Deprecated	Role Based	<a href="https://open.gsa.gov/api/opportunities-soap-api/">https://open.gsa.gov/api/opportunities-soap-api/</a>
Get Opportunities Public API	Production	Public	<a href="https://open.gsa.gov/api/get-opportunities-public-api/">https://open.gsa.gov/api/get-opportunities-public-api/</a>



## Beta.SAM.gov API Status (2 of 2)

API	Status	Access Level	Specs Location
Entity Management API v1	Production	Public	<a href="https://open.gsa.gov/api/entity-api/">https://open.gsa.gov/api/entity-api/</a>
Entity Management API v1	Production	FOUO	<a href="https://open.gsa.gov/api/entity-api/">https://open.gsa.gov/api/entity-api/</a>
Entity Management API v1	Production	Sensitive	<a href="https://open.gsa.gov/api/entity-api/">https://open.gsa.gov/api/entity-api/</a>
Entity Management API v2	Production	Public, FOUO, Sensitive	<a href="https://open.gsa.gov/api/entity-api/">https://open.gsa.gov/api/entity-api/</a>
Exclusions API v1	Production	Public	<a href="https://open.gsa.gov/api/exclusion-api/">https://open.gsa.gov/api/exclusion-api/</a>
Exclusions API v2	Production	Public	<a href="https://open.gsa.gov/api/exclusion-api/">https://open.gsa.gov/api/exclusion-api/</a>
Entity/Exclusions Extract API	Production	Public, FOUO, Sensitive	<a href="https://open.gsa.gov/api/sam-entity-extracts-api/">https://open.gsa.gov/api/sam-entity-extracts-api/</a>

